

Thermowell

solid machined type TW50-J

for glass-thermometer and resistance thermometer

E 11.02.01

Ed.19.01

Application	Thermowell with upper male connection suitable for glass-thermometer or resistance thermometer. Solid machined type
Type	TW50-J
Material	Steel or stainless steel 1.4571
Type	Solid machined type
Upper connection	M18x1,5 upper male connection suitable for thermometer or resistance thermometer
Process connection	G1/2" or G3/4" male thread
Inside diameter	Inside bore size dim \varnothing 8,2 mm for thermometer with stem diameter \varnothing 6, 7 or 8 mm
Outside diameter	Outside dim \varnothing 14 mm
Insertion length	L = 40, 50, 63, 100 or 160 mm
Optional extras	On special request the thermowell can be delivered in different material, in other lengths, with other threads or with other inside diameter.



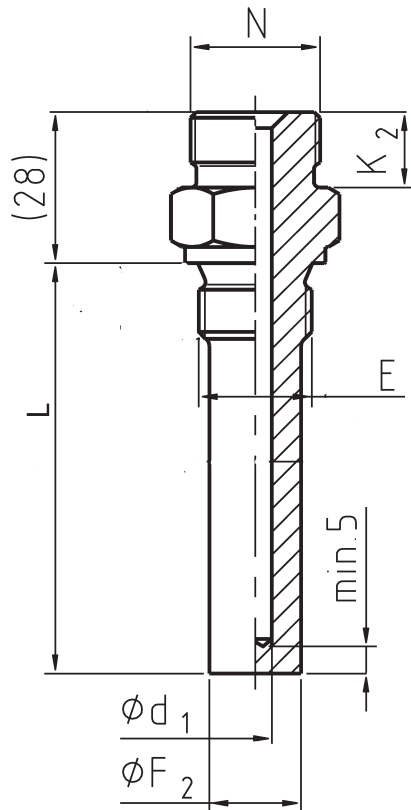
Code number for thermowell			Stainless steel	Steel
Length	Male	Male	TW50-J	TW50-J
L - 40 mm	M18x1,5	G1/2"	70700803	-
L - 50 mm	M18x1,5	G1/2"	70700804	-
L - 63 mm	M18x1,5	G1/2"	70700806	70600806
		G3/4"	70701006	70601006
L - 100 mm	M18x1,5	G1/2"	70700810	70600810
		G3/4"	-	70601010
L - 160 mm	M18x1,5	G1/2"	70700815	-

Thermowell

solid machined type TW50-J

for glass-thermometer and resistance thermometer

E 11.02.01



N = Upper male connection for thermometer or resistance thermometer

E = Lower male connection for process

Max working pressure

Brass = working pressure max 100 bar, temperature max 100°C

Steel = working pressure max 100 bar, temperature max 300°C

Stainless steel = working pressure max 150 bar, temperature max 400°C

Ratings depends on process medium, process pressure, process temperature, flow rate, vibrations, insertion length, material and dimension

N	E	$\varnothing d_1$	$\varnothing F_2$	K2	Immersion length L
M18x1,5	G1/2"	8,2	14	12	40, 50, 63, 100 or 160
M18x1,5	G3/4"	8,2	14	12	63 or 100